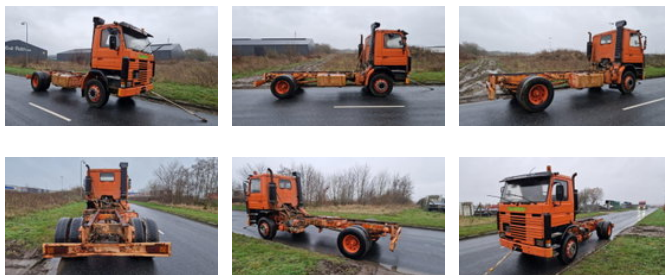


Scania R112 H 4X2 Chassis/Cab AS IS, WHERE IS - LOCATION: SJAELLAND - 4180 SORO

Allgemeine Merkmale

Marke	Scania
Model	R112
Unterkategorie	Fahrgestell LKW
Kilometerstand	794.676km
Baujahr	1982
Datum der Erstzulassung	28-09-1982
Zustand	Gebraucht
Kraftstoff	Diesel
Emissionsklasse	Euro 0
Referenz	3211



Eigenschaften

Kabine	Nein
Seriennummer	XLERH4X2Z04225718

Scania R112 H 4X2 Chassis/Cab AS IS, WHERE IS - LOCATION: SJAELLAND - 4180 SORO

Technische Spezifikationen

Anzahl der Achsen	2
Achsenkonfiguration	4x2
Übertragung	Handgeschenk

Beschreibung

GOOD FOR SPARE PARTS. FIRST REGISTRATION.29-09-1982.. ENGINE TYPE.DS 11 ENGINE NO. GEARBOX TYPE.GR 871
MANUEL... REARAXLE TYPE. FRONTAXLE TYPE.AMA 61. SUSPENTION TYPE.FULL STEEL. TYRES. 315 X 80 X 22,5.70%90%...
315 X 80 X 22,5.40%40%40%40%.. TRUCK DIMENSIONS. L X W X H. 6,95 X 2,50 X 3,37.. O.P.P.... GOOD FOR SPARE PARTS.

Zubehör